

PTA WEBSITE

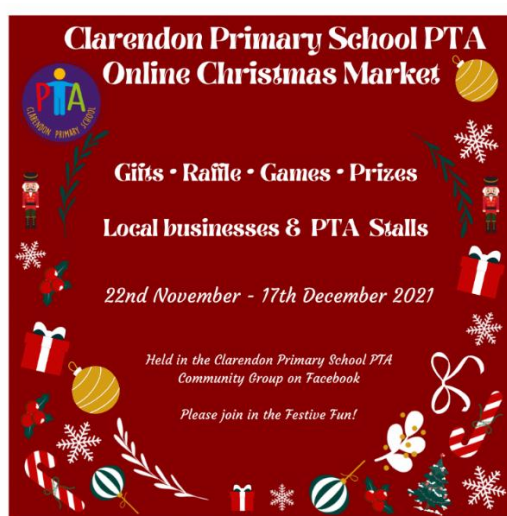
Our PTA website is regularly updated – please take a look to keep you informed of upcoming events, our online shop, our list of partners; <https://www.pta-events.co.uk/clarendonpta/index.cfm?event=partners#.YXFA7RrMI2>

CHRISTMAS RAFFLE

We continue to receive some great prizes for our raffle which we are so grateful for. We hope to be ready to release the link for you to preview some of our prizes this afternoon. Raffle tickets will go on sale from Monday 22nd November and the raffle will be drawn during the last week of term, therefore giving at least 3 weeks for everyone to buy their raffle tickets and be in with a chance of winning a prize!

If you work for a company that is able to donate a prize or are able to help us, contact/chase local companies for prizes then please do let us know.

ONLINE CHRISTMAS MARKET



We have some fantastic stalls lined up for you of local small businesses showcasing their wares. We will of course be having our own PTA stall and we plan to run some fun games during the 4 weeks as-well and it would be great to have lots of you joining in.

The Market will officially start on Monday and so if you are not already a member of our PTA Facebook Group please do join here at this link:

<https://www.facebook.com/groups/777637182813139>

We still have space for some more stallholders so if you run your own business or know of any small business owners who may like to participate, please let us know!

WOULD YOU LIKE TO WIN A NINTENDO SWITCH?!?

We are so excited to announce that Milestone Residential Estate Agents are running a competition in which one lucky person will win a Nintendo Switch and case in time for Christmas!!

All proceeds raised go towards the PTA!
The competition starts on Sunday 28th November, to enter visit their offices in Church Road and guess the number of balloons inside their car.

Good Luck!! 😊



DATES FOR YOUR DIARY:

MONDAY 22ND NOVEMBER: Christmas Raffle will launch and Online Christmas Market will launch and run for four weeks

FRIDAY 26TH NOVEMBER: Mufti Day in return for Tombola donations please at morning drop off. KS1: Chocolates & Sweets and KS2: Bottles of Wine/Alcohol (volunteers needed to help collect and sort these please)

SUNDAY 28TH NOVEMBER: Ashford Christmas Trail – visit the joint PTA/ Milestone stall at Milestone Residential, enter our competition!

WEDNESDAY 1ST DECEMBER: Ashford Christmas Market – visit Milestone Residential for another chance to enter our competition!

FRIDAY 10TH DECEMBER: Donations of Homemade Cakes, Sweet Treats and Decorated/Filled Jars at morning drop-off please (volunteers needed to help collect and sort these please)

FRIDAY 10TH DECEMBER: Christmas Jumper & Dressing Up Costumes Stall, Toy Stall, Homemade Cakes Stall, Decorated/Filled Jars Stall and Sweet Treats Stall – 2:45 – 3:30pm outside school (If you are able to help set up and/or help run a stall please do get in touch)

TUESDAY 14TH DECEMBER – ELFridges Secret Present Pop-up Shop and ELFMail – more details to be announced!

We are still hoping to be able to hold some of the other stalls we would have had at the fair on other days after school as well. Once we have further dates, we will let you know. Reminders of these dates and further information will be sent out nearer the time.

ESTATE AGENT BOARDS - SPONSORSHIP



As you know Milestone Residential Estate Agents are sponsoring the school again this year. Thank you to those of you who have already let us know you are able to display a Happy New Year message outside your property.

This board will go up the first week of January for a month. For each board, the PTA will receive a very generous donation.

We are not yet at our target number of boards and have a fair way to go yet. Please email us ASAP at: clarendonprimaryschoolpta@gmail.com if you haven't already done so – Thank You! ☺

PARTNERSHIPS – NEW & EXISTING

We have made some wonderful partnerships recently with large and small companies alike – we do announce these as we make them and they are all on our website under the 'Partners' tab – so please do remind yourself of these offers and ways to help us raise more money.

Our new partners this week include **First News** a children's newspaper where you can enjoy the first 6 copies **FREE** with your free trial and **Zip & Friends** a small family-owned business who have created some wonderful children's books with an accompanying soft toy; Zip Dog! All orders will generate a donation to the PTA via our unique link: <https://zipdogandfriends.com/zip-shop/ols/products/zip-dog-and-books-pta-offer> Orders to be placed by Friday 26th November 2021 and will then be dispatched to school on Thursday 2nd December 2021 ready for collection!

